

## Responsibly Produced Peat in process to renew certificate

Date of publication 5 January, 2024

Responsibly Produced Peat intends to renew the RPP-certificate to the company named in this document. This intended decision is based on the fact that the company meets the requirements of the RPP certification scheme version 3.0. The fulfilment of the criteria is checked by an independent qualified inspector, including inspection at location.

During a period of 6 weeks, from **January 5 until February 16, 2024** Responsibly Produced Peat offers parties concerned the opportunity to provide comment on the proposed decision. Questions and comments can be sent to [info@responsiblyproducedpeat.org](mailto:info@responsiblyproducedpeat.org). Without further objections, after this comment period, the certificate for the location in concern will be renewed for another 5 years.

Company name	<b>SIA Klasmann-Deilmann Latvia</b> 23, Kulturas street, Zilaiskalns, Valmiera municipality, LV-4222 Latvia
Extraction site	Name site: <b>Rakis</b>
	GPS coordinate entrance peatbog: <b>Latitude : N 57.615277</b> <b>Longitude: E 24.911013</b>
	Total licensed area: <b>729.65 ha</b>
	License information: <b>License number CS18ZD0263</b>
<b>Site description</b>	
<u>Environment of the location:</u> Peat bog has an elongated position with a total size 9km long. It is mostly surrounded by forests what separates the bog from arable lands. At the edge in east side of the peat deposit the Rakis lake is located. The nearest dwellings are about 500m to 1km distance from extraction site. A Natura 2000 site is located at about 3km distance.  <a href="https://ozols.gov.lv/pub">https://ozols.gov.lv/pub</a> – cad.no. 96520030066 [use format “file Geodatabase” and enter cadastral number in search bar]	
<u>Protected areas:</u> The lake is completely separated from the peat extraction. In between is hydrological monitoring installed and continuously performed. Vegetational monitoring is performed every 5 years. Bellow the extraction site a natural raised peat bog is located which has an isolated water catchment area and a mineral layer in between both peat deposits.	

Time in exploitation:  
since the sixties (Soviet times)

Expected end of production based on peat reserves: 2060 (end license)

License valid till: 31 July 2061

**Remarks resulting from re-inspection:**

- Criterion 4.3: Sedimentation ponds are planned and will be implemented before end of the year 2024.
- In the eastern part of the southernmost field, small partfield ditches will be closed for rewetting, an update for southeast area will be given by the end of 2024.

Link to [location on Google earth](#)

See figure 2 for license boundaries.

Figure 1 - Nature information Rakis:

orange = 7110\*, Pristine raised bog

orange with horizontal shading = 7120, degraded high bogs where natural regeneration is possible or underway,

dark green = 9010\* old or natural boreal forest ,

dark green horizontal lines = 9020\*, old mixed broadleaf forests

dark green with cross shading = 91D0\*, bog woodland

dark green with diagonal lines upwards = 9080\*, fennoscandian deciduous swamp woods

dark green with diagonal lines downwards = Oak forests, 9160

light green with diagonal lines downwards = 6270\*, species-rich pastures and grazed meadows,

Lightgreen with black dots = 6450, Floodplain grasslands

red line = micro-reserve of Wet forests, bog woodland and birdcherry trees (S-E of the lake)

red dots are redlist species. Near the license area are observed:

The common toad *Bufo bufo*, near northern thin section.

Ferns and flowers (*Primula farinosa*), near the lake at east side.

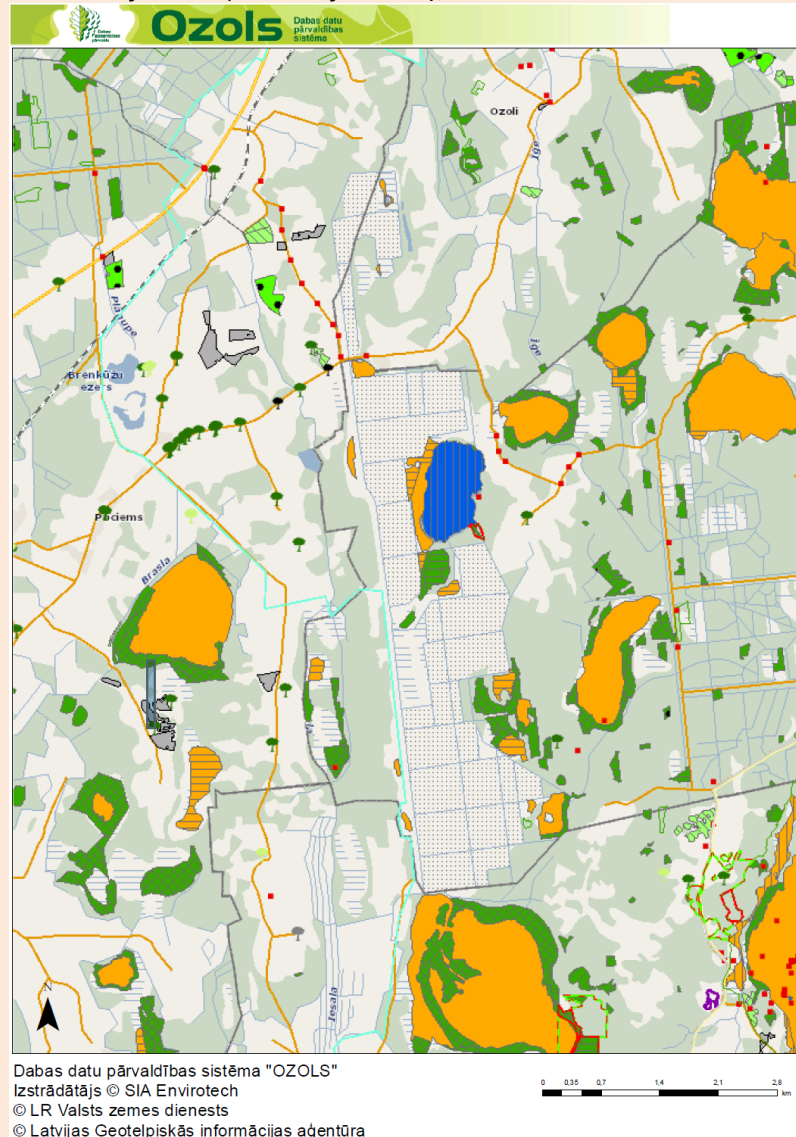


Figure 2: License boundaries

