

Responsibly Produced Peat in process to grant certificate

Date of publication 10 October, 2024

Responsibly Produced Peat intends to grant the RPP-certificate to the company named in this document. This intended decision is based on the fact that the company meets the requirements of the RPP certification scheme version 3.0. The fulfilment of the criteria is checked by an independent qualified inspector, including inspection at location.

During a period of 6 weeks, from **October 23 until December 4, 2024** Responsibly Produced Peat offers parties concerned the opportunity to provide comment on the proposed decision. Questions and comments can be sent to info@responsiblyproducedpeat.org. Without further objections, after this comment period, the certificate will be granted to the company for the location in concern.

Company name	SIA Compaqpeat "Pūces", Rucavas pag., Dienvidkurzemes nov., LV-3477 Latvia
Extraction site	Name site: Lutinani I
	GPS coordinate entrance peatbog: Latitude : N 56.946566 Longitude: E 27.468782
	Total licensed area: 112,4 ha
	License information: License number No.CS12ZD0266 (20.07.2012-19.12.2036)
Site description	
<u>Environment of the location:</u> The Lutinani peat extraction site is surrounded by a mix of forests, agricultural lands, and peatlands, including both protected and unprotected areas. The nearest Natura 2000 site, Orlavas Bog, is located 3.5 km away. Additionally, several heritage trees with large diameters are found in the vicinity, with the closest one situated 2 km from the site.	
<u>Protected areas:</u> The peat extraction site in the southern part of the Lutinani peatland operates as a distinct hydrological unit, separate from the northern part. As a result, peat extraction activities in the southern section do not impact the hydrology of the northern section. The nearest Natura 2000 site is located 3.5 km away and remains unaffected by the peat extraction activities at Lutinani. See fig 1 or go to https://www.lvmgeo.lv/kartes and use cadaster No. 3866005	
<u>Time in exploitation:</u> The peat bog was already developed for peat extraction in the 20th century. In the first half of the	

1970s peat extraction was started on an area of about 110 ha in the southern part of Lutinani Bog. Extraction stopped at the end of the 1980s but resumed in 2012 (SIA "COMPAQPEAT")

Expected end of production based on peat reserves: The estimation is 20236 up to 2045

License valid till: 19-12-2036

Remarks resulting from inspection:

1. The new geological survey is being conducted, and will be provided by February 2025.
2. Mitigation and monitoring measures:
 - a. Hydrological and vegetation monitoring will be implemented well before the next periodic reinspection (before October 2026). The RPP secretariat shall be informed.
3. A detailed after-use plan will be developed based on the geological survey and submitted by the end of June 2025.

Link to [location on Google earth](#)

See fig 2 for license boundaries.

Fig 1: Protected Areas around Lutinani peat extraction site

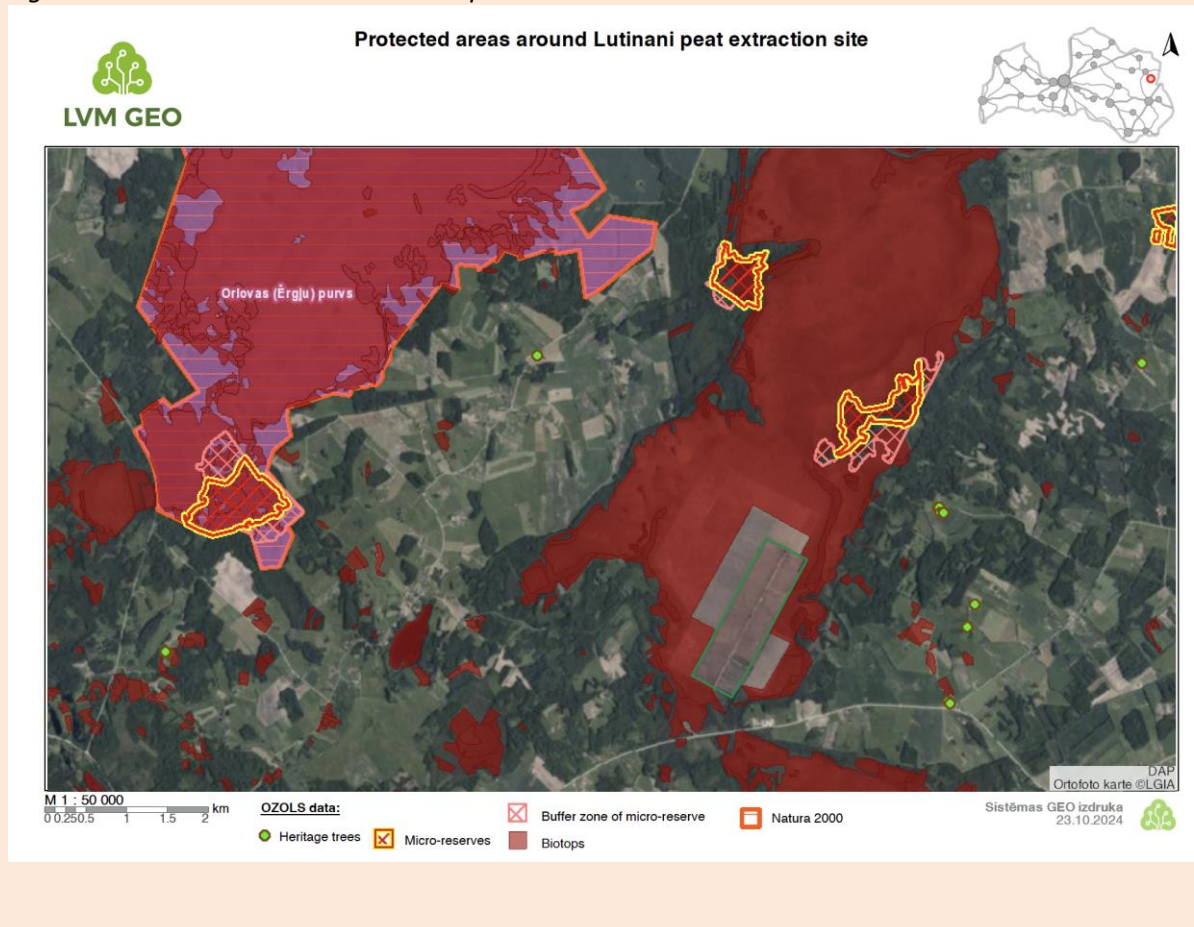


Fig 2: License boundaries Lutinani I

